

## Materials

### SUGGESTED YARN

Jil Eaton Minnow Merino; 100% Extra Fine Superwash Merino; 77 yds [70 m] / 1.76 oz [50 g]

MC: 2 skeins of Mango (4751).

CC's: Less than 20 yds [18 m] each of Elderberry (4727), Snow White (4701), Pinque (4789), Light Blue (4747), and Peacock (4709).

### NEEDLES

US #8/5 mm 16"/40 cm circular and DPNs, or preferred needles for small circumference knitting – or size needed to obtain gauge as listed.

US #6/4 mm 16"/40 cm circular or preferred needles for small circumference knitting - or 2 sizes smaller than that needed to obtain gauge.

### NOTIONS

Stitch marker, tapestry needle.

### Gauge

23 stitches and 26 rows = 4"/10 cm in Chart 2, blocked.

### Sizes

Finished measurement: 13.5 (15.75, 18, 20.25, 22.5)"/34.5 (40, 45.5, 51.5, 57) cm circumference. Intended to be worn with 1"/2.5 cm of negative ease.

*Note: Sample is shown in 18"/45.5 cm.*

### FOR PATTERN SUPPORT

Email: [cowntownknitsd@gmail.com](mailto:cowntownknitsd@gmail.com)

Or visit: Cowtownknitters Group on Ravelry

@cowntownknits on Twitter & Instagram

# PIPPA TOQUE

A PATTERN FROM [cowntownknits](http://cowntownknits.com)



The Pippa Toque is a cute little hat to keep heads and ears toasty and warm on cold winter days. The close stitches and stranded colour work make this a nice thick fabric for great insulation.

## Instructions

### BRIM

With smaller needles and A, CO 64 (74, 94, 106, 116), pm, join to work in the round.

Work in K1P1 rib until work measures 1 (1, 1.25, 1.25, 1.5)"/2.5 (2.5, 3, 3, 4) cm from the CO edge.

P one round.

Increase Round: {K3 (3, 7, 8, 7), kfb} six (six, five, four, one) time (s), then {K4 (4, 8, 9, 8), kfb}

eight (ten, six, seven, twelve) times. [78 (90, 105, 117, 129) sts]

### BODY

Switch to larger needles.

Knit 0 (0, 1, 2, 2) round(s).

Join B, work Chart 1.

Knit 1 round even in A.

**Size 15.75" & 22.5"/40 and 57 cm only:** MIL, K to end. [1 stitch increased]

**Size 18"/45.5 cm only:** K2tog, K to end. [1 stitch decreased]

## All sizes

Knit 0 (0, 1, 2, 1) round(s) even in A.

Work Chart 2.

Knit 1 round even in A.

**Size 13.5"/ 34.5 cm only:** Skip ahead to TOP.

**Size 15.75" & 22.5"/ 40 and 57 cm only:** K2tog, K to end. [1 stitch decreased]

**Size 18"/ 45.5 cm only:** M1L, K to end. [1 stitch increased]

**All sizes except 13.5"/ 34.5 cm:**

Knit - (0, 1, 2, 1) round(s) even in A.

Work Chart 1 again.

Knit 1 round even in A.

**Size 15.75" & 22.5"/ 40 and 57 cm only:** M1L, K to end. (1 stitch increased)

**Size 18"/ 45.5 cm only:** K2tog, K to end. [1 stitch decreased]

[78 (91, 104, 117, 130) sts remaining]

## TOP

Knit even with A until work measures 3.25 (4, 5.5, 6.5, 7.5)"/8.5 (10, 14, 16.5, 19) cm from the CO edge.

## DECREASES

*Note: Change to DPNs when there are too few stitches to work on circular needle.*

**Round 1:** \*K2tog, K9, SSK; repeat from \* to end. [66 (77, 88, 99, 110) sts remaining]

**Round 2 (and every other round):** Knit to end.

**Round 3:** \*K2tog, K7, ssk; repeat from \* to end. [54 (63, 72, 81, 90) sts remaining]

# Glossary

CO	Cast On
DPNs	Double Pointed Needles
K	Knit
k2tog	knit the next two stitches together
kfb	knit into the front and then the back loops
M1L	Make a left-leaning stitch by picking up the bar between the next stitch and the previous stitch from front to back, and knitting it through the back of the loop
P	Purl
pm	place marker
PSSO	Pass slipped stitch over the stitch just worked
ssk	Slip each of the next 2 stitches knitwise (one at a time), slip them back to the left needle and knit them together through the back of the loops
sts	stitches

Chart 1

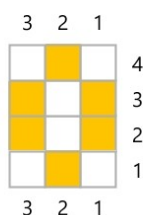
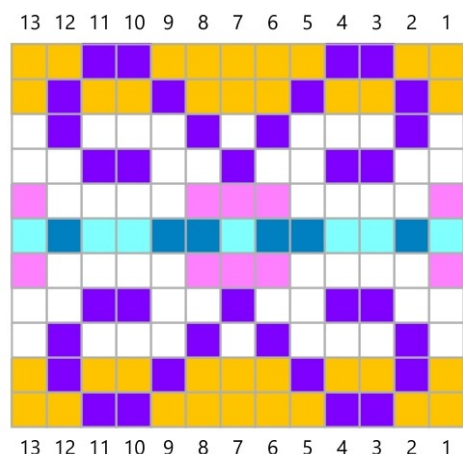


Chart 2



Key



**Round 5:** \*K2tog, K5, ssk; repeat from \* to end. [42 (49, 56, 63, 70) sts remaining]

**Round 7:** \*K2tog, K3, ssk; repeat from \* to end. [30 (35, 40, 45, 50) sts remaining]

**Round 9:** \*K2tog, K1, ssk; repeat from \* to end. [18 (21, 24, 27, 30) sts remaining]

**Round 11:** \*Slip1, K2tog, PSSO; repeat from \* to end. [6 (7, 8, 9, 10) sts remaining]

Cut yarn, with tapestry needle

run the end through all the stitches, slipping them off the needle and pulling snug to close the hole.

Weave in ends and block.

Make a pompom and attach if desired. You can find a photo tutorial on the Cowtown Knits blog at <https://cowtownknits.com/2014/11/02/pompom-tutorial/>